

LCC Modelling System

B 00-20 water tower

All drawings are not in scale.

Some proportions on drawings may differ from reality.

Bundle contains:

- 1x LCC 00-00
- 1x LCC 00-01
- 2x LCC 04-06
- 2x LCC 04-11
- 4x LCC 04-12
- 1x LCC 04-18
- 1x LCC 04-21
- 2x LCC 04-49
- 1x LCC 04-51
- 1x LCC 04-89
- 2x LCC 04-90
- 4x LCC 04-91
- 2x LCC 04-92

For additional elements for modification and extension please visit our website at www.lcut.co.uk or email us at contact@lcut.co.uk

Length: 94mm Width: 49mm

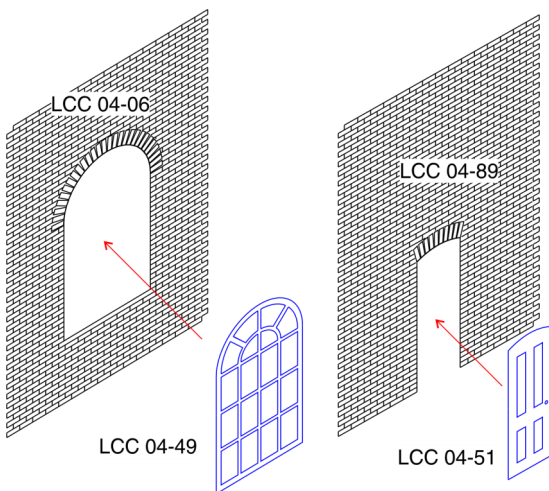
! We recommend PVA or any other paper/wood glue for the main fibre board parts and resin based glue for 3D printed parts if present.

Painting recommendation:

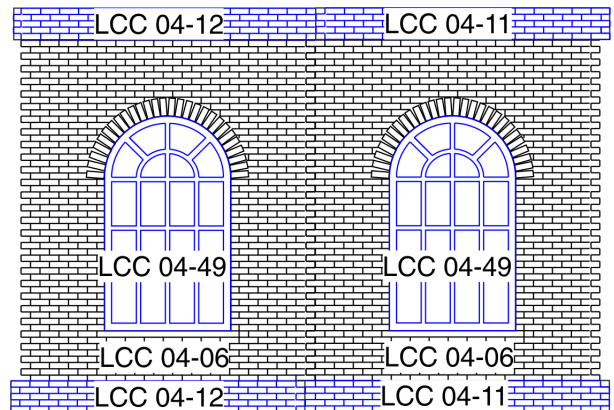
We recommend using acrylic or enamel paints. There is no need to undercoat the surface but it can be done if desired. The material used is porous and relatively forgiving, heavy coats are unlikely to flood the brickwork. If you experience any

warping in the material leave it to fully dry and then gently bend it back into shape. Always test any paints in an area that will not be seen or on spare parts/off cuts.

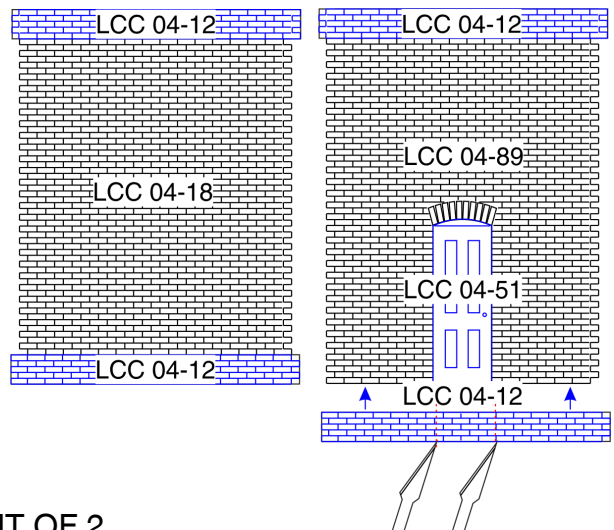
WINDOWS & DOORS ASSEMBLY AND ELEVATION LAYOUT



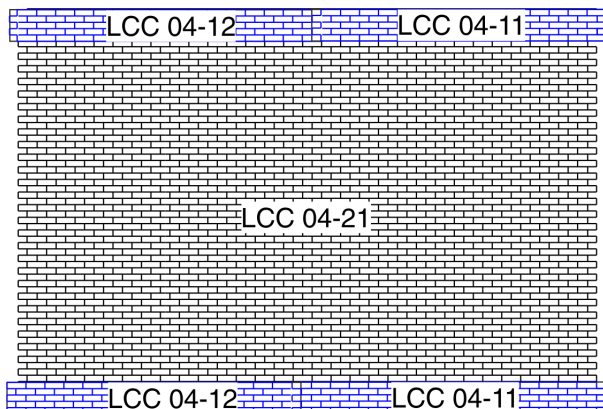
FRONT



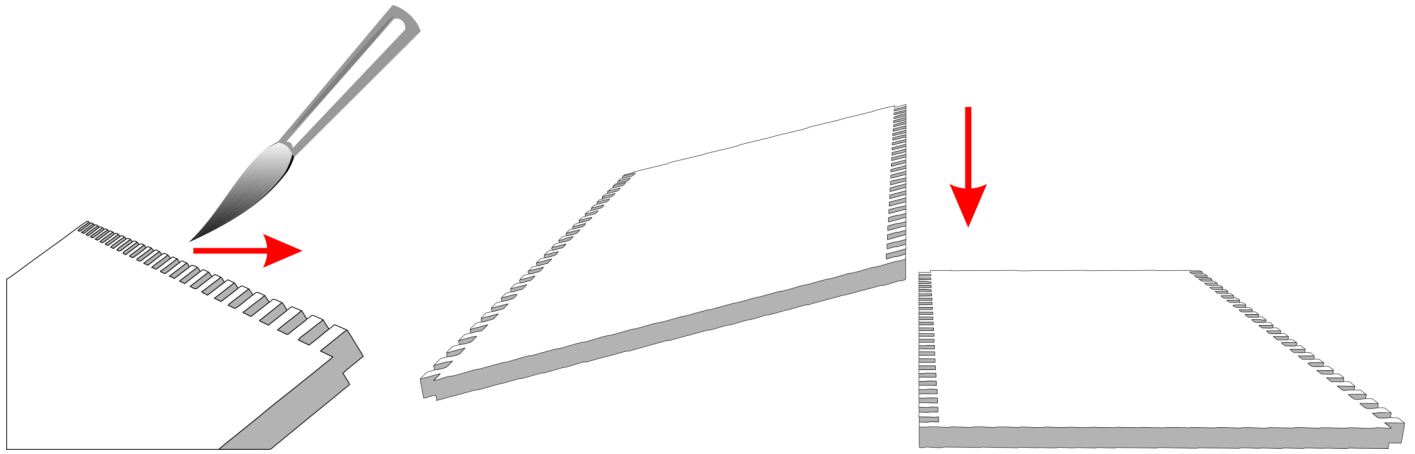
SIDES



BACK



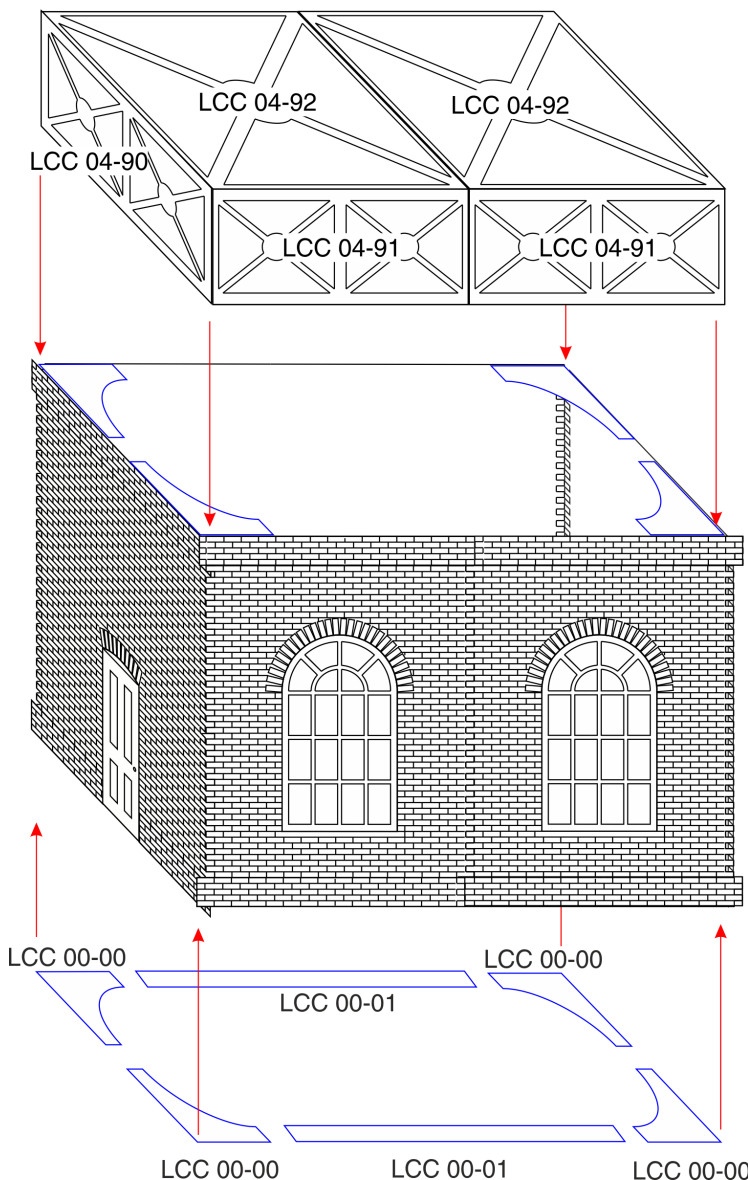
CONNECTING WALL ELEMENTS



Recommended way of gluing parts together is to apply PVA glue to the interlocking bricks working from back of the part to the front. This ensures there will be no glue overflow on the front, visible side.

Then lay the part without glue on flat surface laying on its front (engraved side). Press the part with glue onto the part without glue. Gently push parts together from sides to close the gap.

MAIN ASSEMBLY AND WATER TANK



After the main building is complete (walls and decoration strips) we recommend to strengthen the construction with LCC 00-00 corner supports. In addition glue provided LCC 00-01 in strategic places. It is possible to omit the support structure if the water tower is going to be glued to solid surface soon after being assembled.

If the water tank is being built in an open version simply flip the tank upside down and the LCC 04-92 will provide a bottom to the tank. Make sure to run some additional glue along the join lines before pouring the water resin/other water making product.